



This is a repository copy of Case 339.

White Rose Research Online URL for this paper:

<https://eprints.whiterose.ac.uk/224873/>

Version: Supplemental Material

Article:

Rea, B. orcid.org/0000-0002-4568-0359 and Blakeborough, A. orcid.org/0009-0009-2910-7286 (2025) Case 339. Radiology, 314 (3). ISSN 0033-8419

<https://doi.org/10.1148/radiol.242717>

© 2025 The Authors. Except as otherwise noted, this author-accepted version of a journal article published in Radiology is made available via the University of Sheffield Research Publications and Copyright Policy under the terms of the Creative Commons Attribution 4.0 International License (CC-BY 4.0), which permits unrestricted use, distribution and reproduction in any medium, provided the original work is properly cited. To view a copy of this licence, visit <http://creativecommons.org/licenses/by/4.0/>

Reuse

This article is distributed under the terms of the Creative Commons Attribution (CC BY) licence. This licence allows you to distribute, remix, tweak, and build upon the work, even commercially, as long as you credit the authors for the original work. More information and the full terms of the licence here: <https://creativecommons.org/licenses/>

Takedown

If you consider content in White Rose Research Online to be in breach of UK law, please notify us by emailing eprints@whiterose.ac.uk including the URL of the record and the reason for the withdrawal request.



eprints@whiterose.ac.uk
<https://eprints.whiterose.ac.uk/>

Fig 1 – Selected axial images from a contrast-enhanced MRI liver performed with Gd-EOB-DTPA (Gadoxetic Acid) prior to liver resection. Sequence to be read left to right. (A) T2, T1 in, and opposed phase imaging; (B) T1 post contrast imaging performed in the late arterial, portal venous, and hepatobiliary phase.

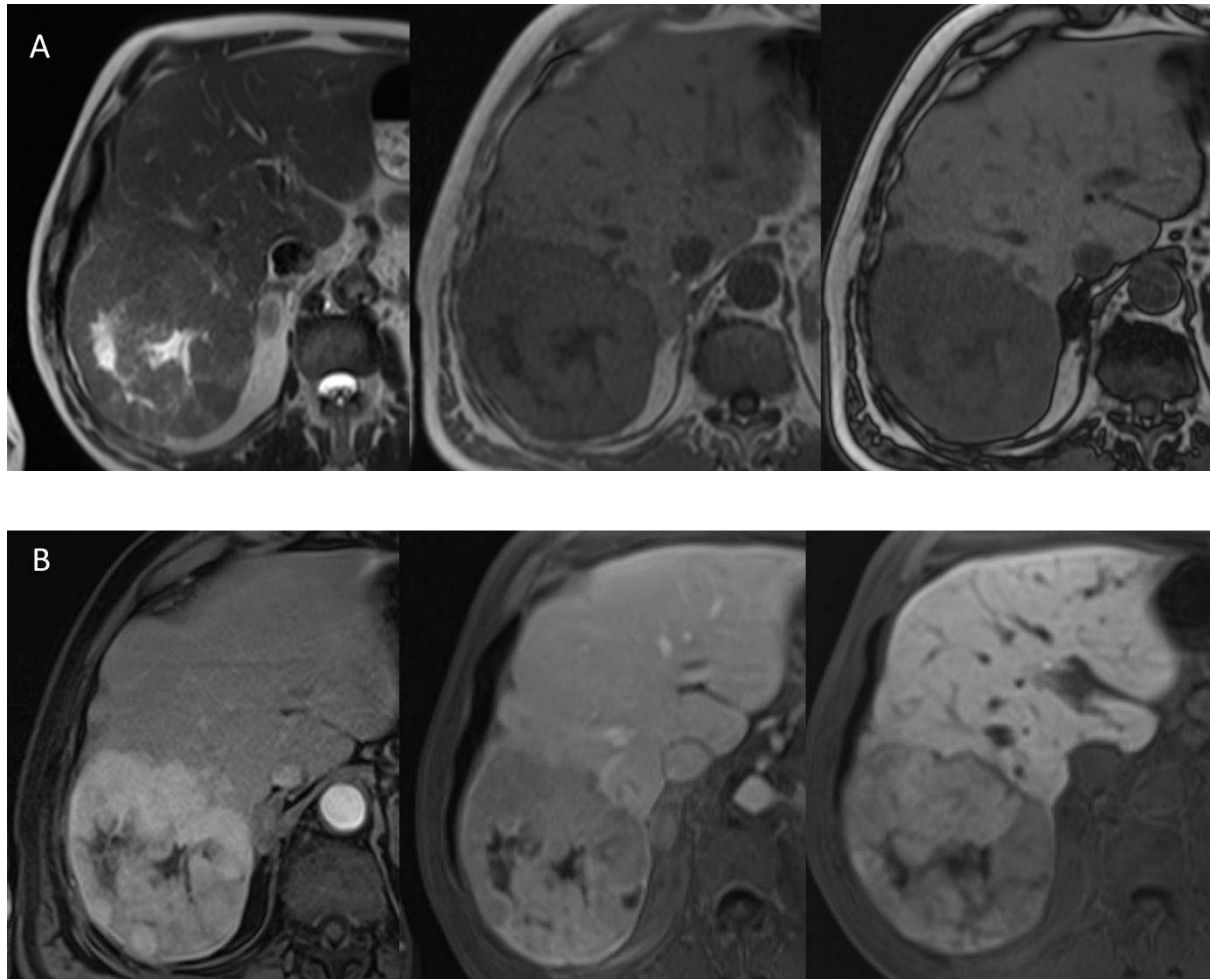


Fig 2 - Selected axial images from a contrast-enhanced MRI liver performed with Gd-EOB-DTPA (Gadoxetic Acid) 4 months after liver resection. Sequences to be read left to right. (A) T2, T1 in, and opposed phase imaging; (B) T1 post contrast imaging performed in the late arterial, and hepatobiliary phase (left to right).

